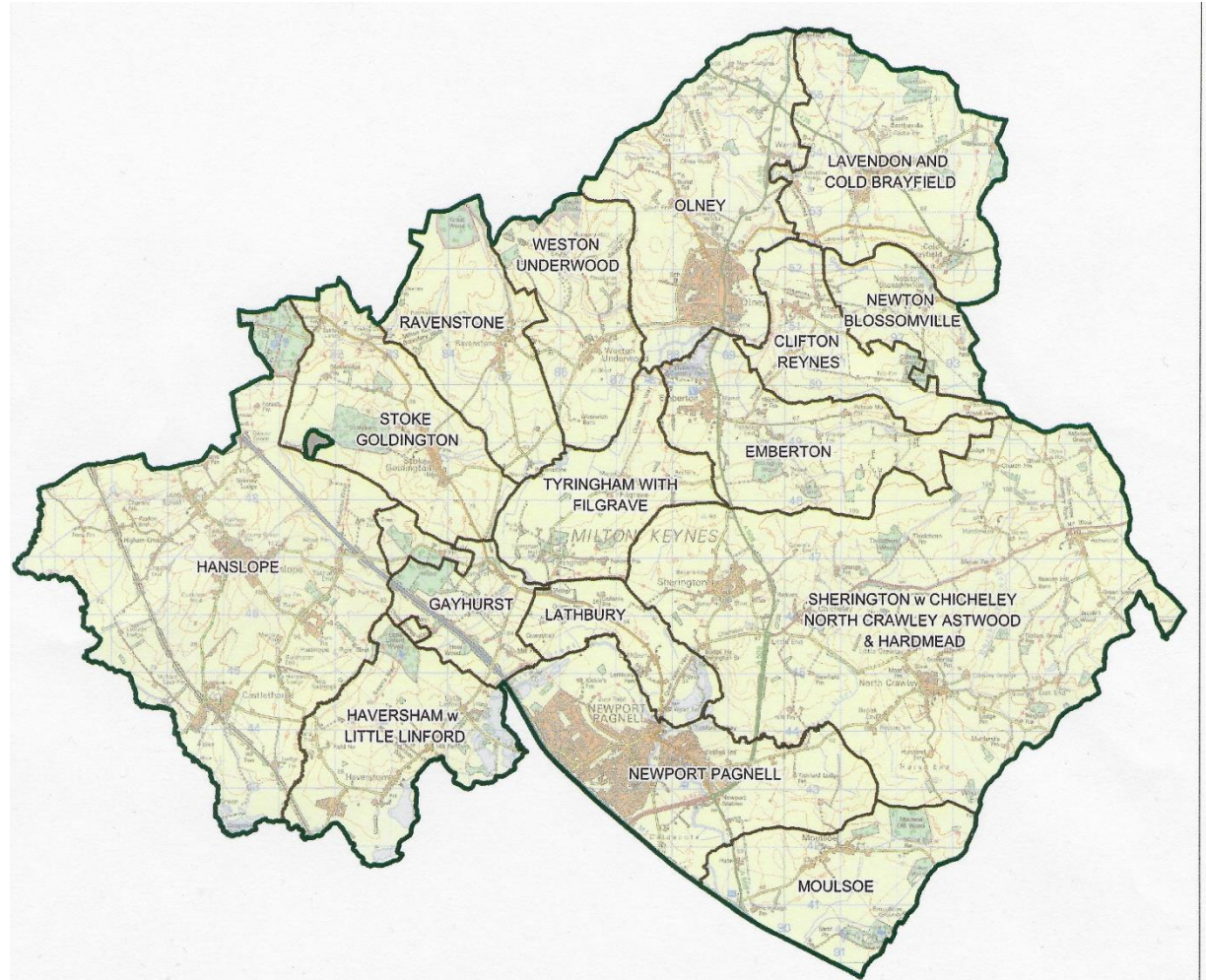
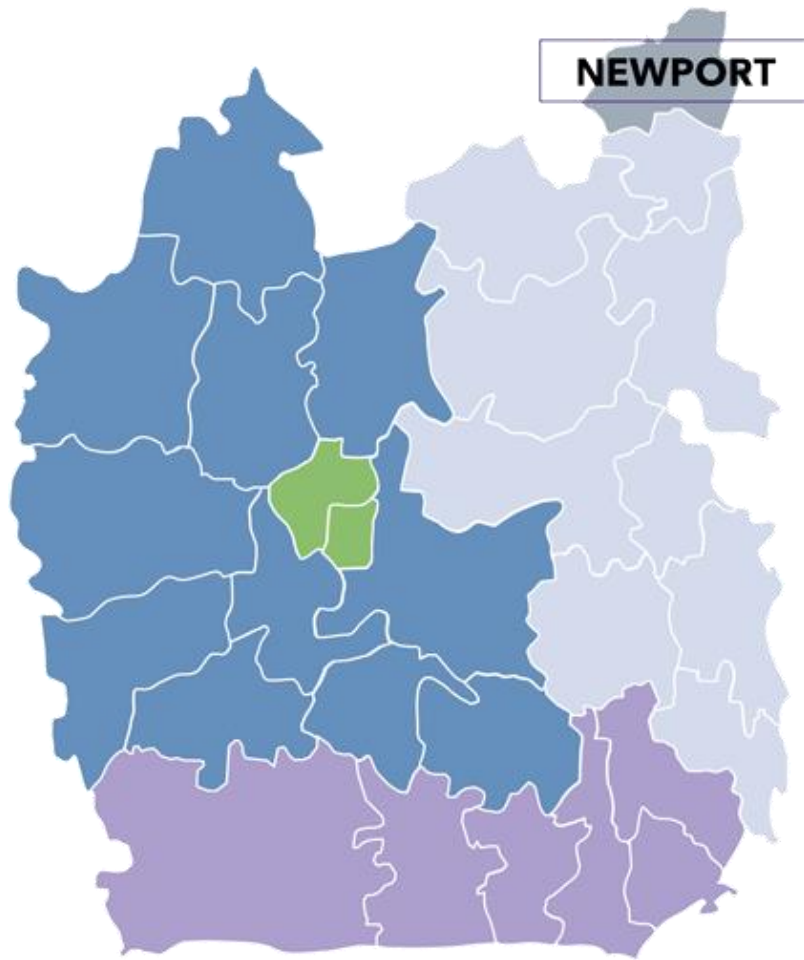


# The Deanery of Newport: A Future Fit for Purpose



## Covering Note

*Dear Friends,*

In the period immediately prior to the Pandemic as Area Dean and Lay Chair, we were able to visit most of the PCCs of the Deanery and heard from many others too about their hopes, fears and aspirations for the future shape of mission and ministry in Newport Deanery. We have tried to listen very carefully to what we have been told and hold in tension a range of factors, which we described as our red lines, in the initial consultation document. As a result of this process we share three potential options for the future shape of mission and ministry across the deanery and as we do so we reiterate some of the underlying wider principles we look to strive for in our shared life across the Deanery:

### **Principles:**

- Valuing our distinctive local identities and ways of 'doing' church; influencing strategic policy and finance decisions from the Diocese and Archdeaconry
- Developing lay ministry, including the additional priority work identified with young people and families
- Enhancing opportunities for mission through the better use of existing voluntary and other resources, including training, potential joint admin/finance servicing for local churches and experience sharing. Working better together.
- Retaining existing stipendiary clergy numbers sustainable by our congregations, recognising potential future growth in population across the deanery
- Supporting volunteer PTO (Permission to Officiate) ministry, our unsung heroes!

### **Next steps:**

The Buckingham Archdeaconry Mission & Pastoral Committee (AMPC) are aware of the process we are working through. We will share this document with AMPC. Once we as a Deanery reach a consensus over the way ahead, we share that outcome with the AMPC who will consider our proposals and preferred option(s), they might ask for further clarifications or approve the plan.

There is then a further, statutory, consultation process with all interested parties including patrons, PCCs, and church members and others, which follows *before* any legal implementation of changes can come about.

## Timetable

### 1. Friday 22<sup>nd</sup> October: Options Paper Published

PCCs are asked to discuss the options and to feed back initial responses.

Within each of the three options there is the possibility for amendments to be suggested.

### 2. Wednesday 1<sup>st</sup> December: Open Synod meeting attended by Archdeacon Guy

PCC members are invited to attend and PCCs are encouraged to share their *initial* thoughts. Archdeacon Guy will lead a Q&A about the proposals, wider context and legal process.

No formal decisions will be made.

This is followed by further time for local discussion and consultation in association with key stakeholders, the Area Dean and Lay Chair during December, January and February.

### 3. March 2022

A Synod meeting to reflect further or, potentially, to recommend a way ahead.

We commend this ongoing process to your prayerful consideration,

Tim Edwards                      *Lay Chair*

Fr Gary Ecclestone SSC      *Area Dean*

October 22<sup>nd</sup> 2021

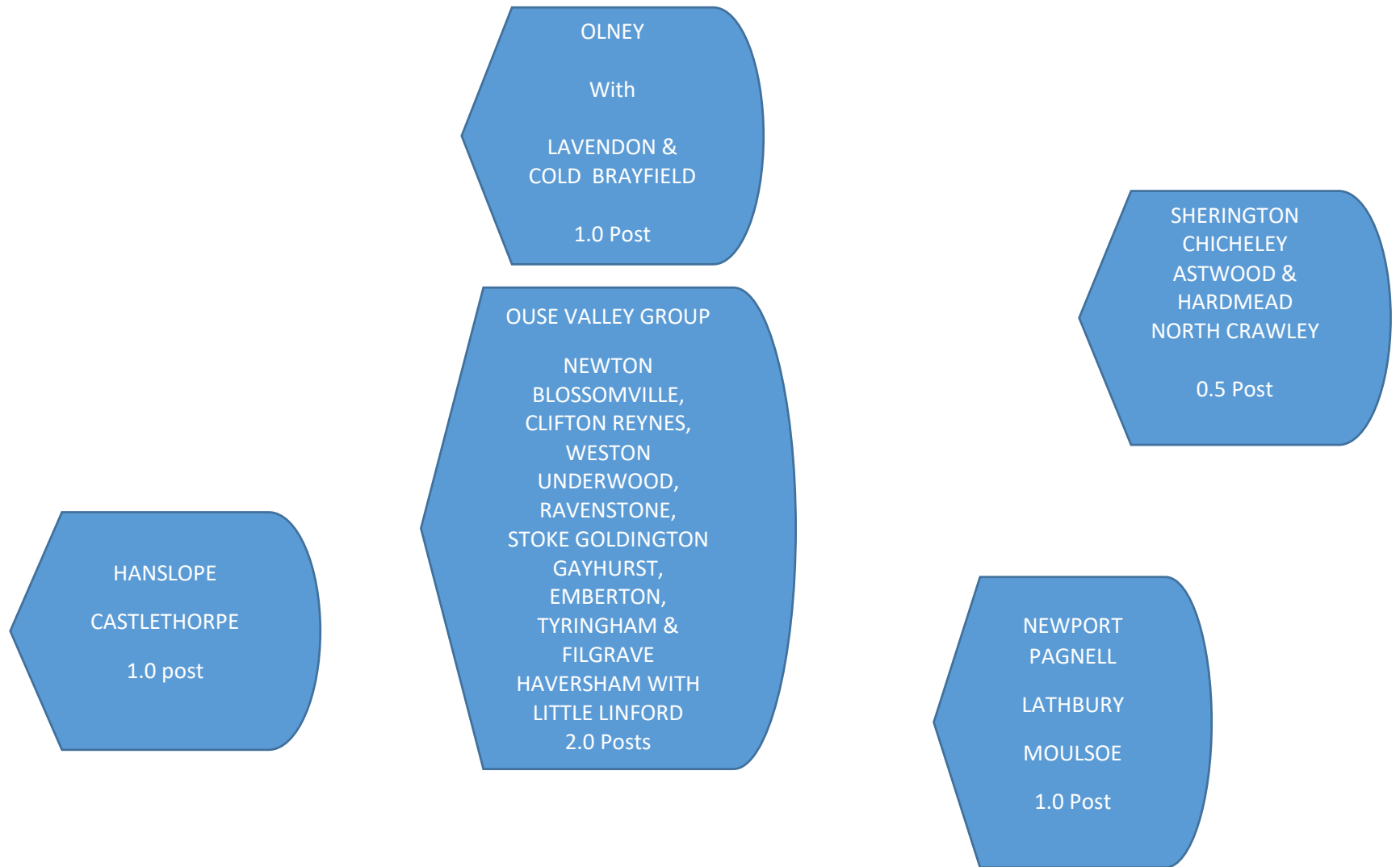
## Note

Major Building Developments

Major proposals such as those at Moulsoe are beyond the remit of this Deanery Plan and will be looked at as a separate project at the appropriate time with all the key stakeholders. There may even be implications for the diocesan boundaries as Milton Keynes moves inexorably east and Bedford develops westwards



# OPTION ONE



## NOTES

1. This option seeks to preserve the current 5.5 posts
2. The Ouse Valley Group responds to the suggestion that grouping the villages at the heart of the deanery geographically together is a possible way forward, however it is not clear this Group could in fact sustain two full time posts
3. In this model clergy housing could be used creatively for a House for Duty or part stipend post for all or a defined part of the deanery – this could be an additional priest or Youth & Families Worker



# OPTION TWO



## NOTES

1. This option seeks to preserve the current 5.5 posts
2. This model often referred to as a Minster model groups villages around a nearby town. However, not all the communities in the Deanery naturally look to either Olney or Newport Pagnell. Hanslope & Castlethorpe historically look westwards to Stony Stratford for instance and Haversham made representations that they didn't look either to Newport or Olney situated as close as they are to Wolverton.



# OPTION THREE



## NOTES

1. This option has the largest number of groupings recognising more fully the mixed economy of the deanery in terms of geography, population size, worshipping congregation size and church traditions